

Rheb-GTP

Catalog Number: 26910

Gene Symbol: RHEB

Description: Anti-Rheb-GTP Mouse Monoclonal Antibody

Background: Small GTPases are a super-family of cellular signaling regulators. Rheb is a member of the Ras-superfamily GTPases. Rheb has been shown to interact with C-Raf, Mammalian target of rapamycin (mTOR), TSC2, Ataxia telangiectasia mutated (ATM), KIAA1303 and Ataxia telangiectasia and Rad3 related (ATR).

Immunogen: Recombinant full-length protein of active Rheb

Tested Applications: IP, IF, IHC

Recommended Dilutions:

IP: 1 µg for 1~2 mg total cellular proteins

IF, IHC: 1:100-1:500

Concentration: 1 mg/ml

Host: Mouse

Clonality: Monoclonal

Isotype: IgM

Purity: Purified from ascites

Format: Liquid

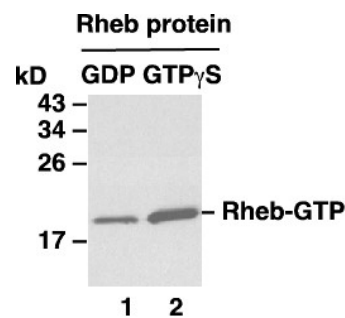
Preservative: No

Constituents: PBS (without Mg²⁺ and Ca²⁺), pH 7.4, 150 mM NaCl, 50% glycerol

Species Reactivity: Anti-Rheb-GTP antibody recognizes active Rheb of vertebrates

Storage Conditions: Store at -20°C. Avoid repeated freezing and thawing

Immunoprecipitation/Western blot



IP: anti-active Rheb mAb

WB: anti-Rheb pAb

Rheb Activation Assay.

Purified Rheb proteins were immunoprecipitated after treated with GDP (lane 1) or GTP γ S (lane 2). Immunoprecipitation was done with the anti-Rheb-GTP monoclonal antibody (Cat. # 26910). Immunoblot was with anti-Rheb rabbit polyclonal antibody (Cat. # 21098).

FOR RESEARCH USE ONLY. NOT FOR DIAGNOSTIC APPLICATIONS